

VISIONIS

VIS-7005

Request to Exit Button



User Manual

Please read the instruction carefully before installing

1. Packing List

Name	Quantity	Remark
VIS-7005	1	
User manual	1	
Rubber bungs	2	∅6X24mm
Self tapping screw	2	∅3X20mm
Screw driver	1	
Wire	4	four wires(2 x yellow, 1 x red, 1 x black)
Location sticker	1	

Please ensure that all above connects are correct. If any are missed, please contact the supplier.

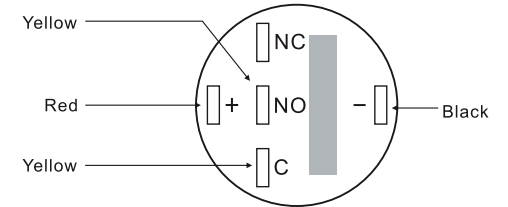
2. Product Introduction

VIS-7005 is built in aluminum alloy panel, with black surface mirror. The showy LED makes it convenient to use at night. The distinguished design feels noble and fashion. No doubt, it is an ideal choice for door access.

3. Wiring

Color	Function	Description
Red	12V DC	LED light Positive
Black	GND	LED light Negative
Yellow	NO	Connect to device OPEN
Yellow	C	(Common)connect to device Negative
	NC	NC

Front elevation of switch PIN introduction(Switch state: when press the button, two yellow wires connected)



4. Technical Parameters

Panel material	Aluminum alloy & PC(surface)
Panel thickness	2.5mm
Switch rating	250V AC
Mechanical life	Exceed 1 million times
Contact resistance	≤60 mΩ
Insulation resistance	≥1000MΩ
LED light color	White
LED supply power voltage	12V DC
LED power	≤0.22W
Operating environment	-20° C ~ +60° C(- 4° F ~ +140° F)
Dimension	L90 x W40 x D2.5 mm

①

②

5. Installation

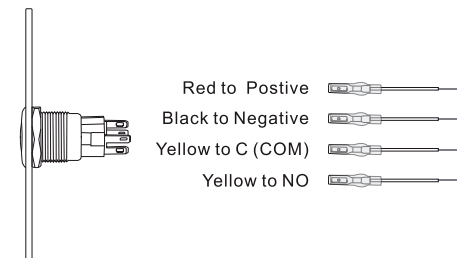
Step 1: Attach location sticker and drill holes (See picture 1)

- > Remove the location sticker from base paper, and attach it to the installation position
- > Drill holes (Diameter: 27mm & Depth: 60mm) for the screws according to the location sticker

Remark:

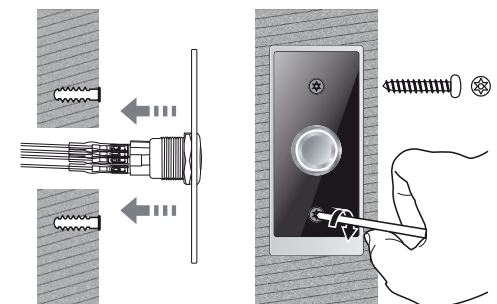
- > When install it on the wall, suggest to use the 6mm chopping bin to drill the hole, and then use the hammer fix the rubber bungs to the hole.
- > When install it to doors, suggest using 2mm bin.

Step 2: Connect the four different color wires to the right position of plug (see picture 2), then double check and test the VIS-7005.

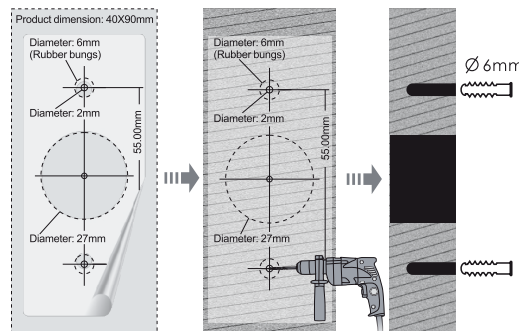


Picture 2

Step 3: Fix the device firmly with the screws (See picture 3).



Picture 3



Picture 1

③

④