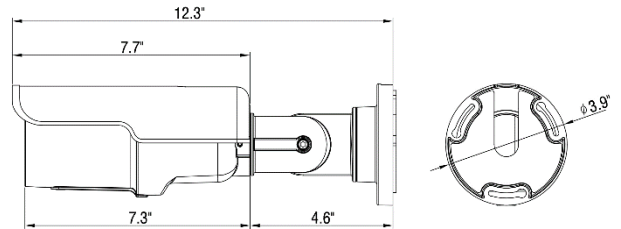


## DH-IBV-780WN-MZ

- > 1/2.8" 2.4 Megapixel SONY CMOS
- > 30fps @ 1080P
- > Mini. Illumination of 0.05 Lux @ F1.2, 0 Lux (IR On)
- > AGC, ATW, BLC
- > Built-in IR LEDs (100ft IR Distance)
- > 2.8-12mm Motorized Lens
- > IP66



Model	DH-IBV-780WN-MZ
IP Rating	IP66
Image Sensor	1/2.8" 2.4 Megapixel SONY CMOS
Effective Pixels	NTSC: 1920(H)X1080(V)
Horizontal Resolution	30fps@1080P
Minimum Illumination	0.1 lux @ F1.2 (0 lux when IR LED On)
Lens	2.8-12mm Motorized Lens
S/N Ratio	MORE THAN 50dB
IR LEDs	850nm, 42 LEDs
IR Distance	150ft Depending on Scene Reflectance
Video Standard	NTSC
Electronic Shutter	Auto: 1/60 ~ 1/30,000s
OSD Control	On-Screen Display Menu (Languages, Privacy Area, Color, etc.)
Digital Noise Reduction	2D DNR
White Balance	Auto / Manual
Wide Dynamic Range	DWDR
Video Output	1.0Vp-p, 75Ω Composite BNC, HD-CVI
Power Supply	DC 12V, Less than 10 Watts
Operating Temperature	-20°C ~ 50°C (-4°F ~ 122°F)
Dimensions, Weight	3.9" (H) x 12.3" (L)